





WebLink 4.0 Client Login Guide

Argent

Welcome to WebLink!

Argent Web Portal Access

WebLink provides access to your investment portfolio 24/7. The **minimum** browser versions currently supported are:

	Google Chrome 27.0
	Mozilla Firefox 25.0.1
	Safari 6.05
	Opera 17.0

Below is the URL you will use to login to WebLink to access your Argent Account(s). Please bookmark this in your browser for easy access to WebLink:

WebLink URL

<https://login2.fisglobal.com/idp/AFGTRPWL/?ClientID=WeblinkUIG3>

Copy and paste this URL into your browser.

First Time Login Procedure with Multi-Factor Authentication

- Enter the User ID that was provided in your “Welcome to WebLink” email and click **Proceed**.



User Login

User ID / Alias *

TESTUSER

Remember my User ID

Proceed

[Trouble signing in?](#)

- Enter the password that was provided to you in a separate email from your User ID and select **Sign In**.



User Login

Welcome
TESTUSER
[Not You?](#)

Password *

.....

[Cancel](#) [Sign in](#)

[Trouble signing in?](#)

The next screen displays “Change Password”.

This is the page that will allow you to create your own password.


Please make sure your new password matches the following criteria:

- 8 Characters Minimum
- 1 Upper Case
- 1 Lower Case
- 1 Number
- 1 Special Character

PLEASE NOTE: In the “Old Password” field you will be entering the temporary password provided to you.



Change Password

 This page allows you to update your password.
The following rules apply when changing passwords:

Passwords must contain at least 4 characters, one uppercase character, one lowercase character, one number and one special character (!@#%&*()_+}{":;'/?/><.,).

The new password must meet the defined password criteria.

The new password cannot contain the same 1 character(s) from previously used password.

The new password must be different from the last 3 previously created password or passwords.

Old Password: *

New Password: *

Very Strong

Confirm New Password: *

Cancel

Proceed

- Enter old password, new password, and confirm new password, then select “Proceed”.

Security Image Setup

You will then be presented with a page that explains that you will choose an image to be associated with your profile to help you identify the login page as genuine.



Security Image Setup

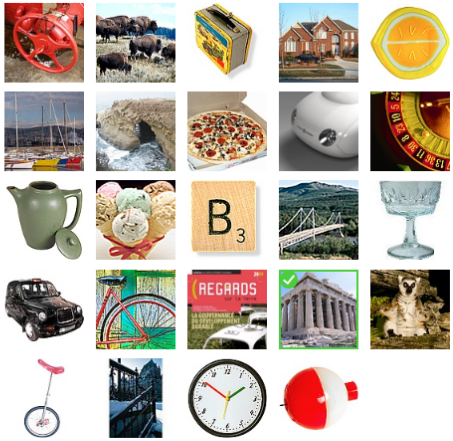
1 Choose an image from the catalog provided and write a caption for it. These will both appear on your screen once you enter your username. This will help you identify the login page as genuine, reducing the risk of a Phishing attack.



- Select the image of your choosing to be associated with your profile and click Proceed.



Select Security Image



The next screen displays the image that you have selected.

- In the box, add a Personalized Caption to go with this image, then click **Proceed**.



Image Caption



Your Personalized Caption:

Back

Proceed

The next time you login to WebLink, after you enter your User ID and click proceed you will be presented with this image along with your personalized caption.

Register Device on First Sign-In

NOTE: *Please clear browser cache before first login.*

You can register your mobile number during first sign in to WebLink, so you can receive the OTP (via either SMS or Voice Call) on the registered mobile number going forward.


You will be prompted to set up an OTP Device which will serve as the delivery destination where you will receive time-limited passcodes during your login process.


This should preferably be a mobile device that you will be able to access anytime you are trying to login to your WebLink profile.

- Select the option **“Add a New Device”**



Select OTP Device

 Your Out-of-Band PIN Device is the delivery destination where you will receive time-limited passcodes (PINs) during the login process. When prompted to enter your PIN, you will use that device to retrieve your PIN.

 **Test Device** + **Add a New Device**

Cancel

Proceed

After you select **“Add a New Device”**, there will be a popup where you will enter a name for the device, device preference (SMS/TEXT Message) and your mobile phone number.

Add New Device ×

Device Name *

Device Profile
SMS/Text Message ▼

Country Code * United States (+1) ▼

Mobile Number *

Cancel Save

- Once you have this information entered, press **“Save”** and you will be taken back to this screen where you will then select this device. After selecting the device, press **“Proceed”**.



Select OTP Device

i Your Out-of-Band PIN Device is the delivery destination where you will receive time-limited passcodes (PINs) during the login process. When prompted to enter your PIN, you will use that device to retrieve your PIN.

Test Phone (+12056887881)

 **Test Device** + **Add a New Device**

Cancel Proceed



Device Registration

i If you are using this computer at home or work, or this is your personal mobile device, you can register it to skip the security questions or PIN Code in the future. This should only be done on your own secure computer or device where nobody else uses it (never select this option on a shared computer in a public location).

- No, this is not my computer or mobile device.
- Yes, this is my computer or mobile device that I use regularly.

Cancel

Proceed

On the “Device Registration” screen, No, or Yes as applicable and click **Proceed**.

At this point you have successfully logged into the Argent Weblink Client Portal!

If you have any issues or questions concerning logging into the Weblink platform, please contact your **Argent Administrator or Relationship Manager**.

The screenshot displays the Argent Weblink Client Portal interface. On the left is a navigation menu with items: Portfolio Review, Available Cash, Transactions, Holdings, Tax Lots, Gain/Loss, Accounts, Cash Projections, File Downloads, and My Reports. The main content area is titled 'Portfolio Review' and includes a search bar with '1001' entered. Below the search bar are filters for 'As Of Date' (9/16/2025), 'Group By' (Investment Category), 'View' (Settlement Date), and 'Cash election' (Show as Income Cash and Principal Cash). The interface is divided into four panels: 'Asset Allocation' with a donut chart showing 8.42% CASH AND EQUIVALENTS, 46.62% EQUITIES, and 44.96% FIXED INCOME; 'Market Value' with a bar chart; 'Account Summary' showing Total Market Value, Year to Date Long Term Gain/Loss (NONE), and Investment Authority (NONE); and 'Investment Summary' showing Total Cost, Year to Date Short Term Gain/Loss (\$0.00), and Investment Objective (UNKNOWN). Below these panels is a 'Holdings' table with 26 items, featuring columns for Quantity, Ticker, Security Description, Price, Cost, and Market Value. The table shows a large block for 'CASH AND EQUIVALENTS' and several rows of individual holdings. At the bottom, there is a footer with the date '2022.6.81-1.17', copyright '©2025', a last login timestamp 'Last login: Sep 17, 2025 10:40 AM', and a session status 'Good Morning, Test. Your session will end at 11:01AM'.